

you can
Canon

PowerShot S80
PowerShot S3 IS

Balancing creative control,
performance and portability.







THE POWERSHOT S80.

ALL THE POWER IN YOUR HANDS.

The PowerShot S80's 8.0 Megapixel CCD provides truly outstanding image resolution. Capturing details and colours to an exceptional degree, your printed photographs retain all the vibrancy and clarity of the original image, even when printing at A2. A Canon 3.6x wide-angle optical zoom lens provides sharply-defined images at all focal lengths, while a large 2.5" LCD makes composing, menu-navigation and photo sharing easy. Fitting effortlessly into your hand thanks to its sleek, compact and ergonomic design, the PowerShot S80 lets you shoot high-resolution movie clips complete with sound.

More features, more control, more freedom to create.

In the world of photography, do you look to push the boundaries? Do you want levels of photographic performance beyond the ordinary, with features to inspire you to new levels of creativity? If so, here's not one but two cameras to meet your demands - the PowerShot S80 and the PowerShot S3 IS.



THE POWERSHOT S3 IS.

TAKING YOU CLOSER.

Switch on the PowerShot S3 IS and straight away you realise you're in the presence of an outstanding camera. Elegant with its gun-metal finish, it houses a remarkable Canon 12x optical zoom lens within its compact, intuitive design. The zoom, along with the Optical Image Stabilizer, delivers pin-sharp precision and vibrant colours throughout its extensive focal range. The 6.0 Megapixel CCD, Ultrasonic Motor (USM) and advanced movie-making capability are just some of the technological features that give you the power and flexibility to extend your creativity to the limits.

Technology that inspires.

The technical genius behind the PowerShot S80 and PowerShot S3 IS is the result of decades of experience in both optical and electronics engineering. The result is Canon Visionary Technology – every element of the Canon digital imaging process working in harmony to produce photographs of scenes as you remember them.



DIGIC II PROCESSOR

DIGIC II Canon's unique DIGIC II processor is at the very heart of the PowerShot S80 and PowerShot S3 IS – maximising performance. It ensures superb image quality, fast and accurate auto-focus, more responsive camera controls and enhanced movie recordings. What's more, because it processes so quickly, battery life is extended.



iSAPS ISAPS TECHNOLOGY

Even before you press the shutter release, iSAPS (Intelligent Scene Analysis based on Photographic Space) evaluates your composition and compares it against a vast in-camera database of different images and settings. This dramatically improves the camera's ability to interpret shooting situations and deliver brilliant images without delay.

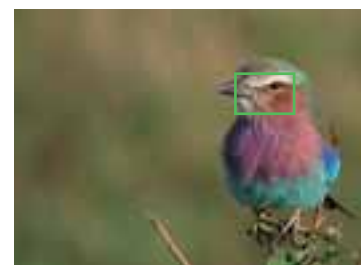
HIGH PERFORMANCE LENSES

With today's high resolution sensors, the quality of a camera's lens is absolutely critical to picture quality. The result of over 60 years of optical excellence and using specialist materials and manufacturing processes to achieve the very zenith of design standards, the Canon lenses used in the PowerShot S80 and PowerShot S3 IS ensure image quality is never compromised for a moment.



FLEXIZONE AF/AE

The PowerShot S80 and PowerShot S3 IS are equipped with FlexiZone AF/AE. This lets you move the AF/AE metering frame around the scene you're shooting to select the area you want to focus on. Exposure is then automatically calibrated for the selection.

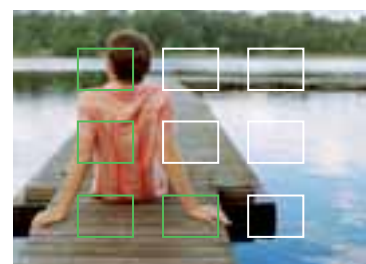


FlexiZone AF/AE



AMAZING AiAF

The PowerShot S80 has a fast 9-Point AiAF that uses nine fixed focusing areas across your shooting scene to automatically focus on your closest subject. This ensures the subject of your image is sharp and in focus, even if it's off-centre.



9-point AiAF



Take control of your creativity.

The PowerShot S80 and PowerShot S3 IS feature a huge variety of creative and automatic shooting modes¹ to give you more control over your shots than ever before.

AUTO

The camera selects all parameters based on shooting conditions, so you can just point and shoot.

CUSTOM

Select your own preferred combination of settings and save them for quick access.

PROGRAM

The camera sets both shutter speed and aperture, while you control all other parameters such as white balance and flash.

MANUAL

Get complete control and set all the parameters, including aperture, shutter speed and focus.

SPECIAL SCENE MODES¹

Achieve great results through these preset modes without having to resort to manual control.

- | | |
|----------------|---------------|
| FOLIAGE | KIDS & PETS |
| SNOW | DIGITAL MACRO |
| BEACH | NIGHT SCENE |
| FIREWORKS | PORTRAIT |
| INDOOR | LANDSCAPE |
| NIGHT SNAPSHOT | COLOR SWAP |
| UNDERWATER | COLOR ACCENT |

APERTURE PRIORITY²

Set the aperture to control the depth-of-field. The camera automatically selects the appropriate shutter speed.

SHUTTER SPEED PRIORITY²

Freeze a moving subject or create a blur by controlling the shutter speed. The camera automatically selects the best aperture.

SPORTS

Shoot moving subjects with enhanced auto-focus performance.

STITCH ASSIST

Shoot a sequence of up to 26 images and then join them together to create a single long panoramic image using the supplied PhotoStitch software.

MOVIE

Record movies in VGA, or QVGA resolution with sound (and superb stereo sound with the PowerShot S3 IS). With the PowerShot S80, you can even record XGA resolution movies at 15 frames per second. You can then play them back and edit them instantly using the camera's LCD.



My Colors.



Add a personal touch to your image or movie with Canon's My Colors!¹



Choose from vivid blue for the sky, antique sepia for the portrait or classic black and white for the landscape. These creative options and many more – normally available only on a computer – can be applied directly from your camera, before or after the shot.

Vivid Blue

¹ Shooting modes and My Colors vary on selected models. Please refer to the technical specifications for detail. On the PowerShot S3 IS the Portrait, Landscape and Night Scene modes are accessible directly from the Mode Dial as separate shooting modes.

² Switching on the safety shift function protects against over or underexposure by automatically shifting the settings to compensate for the conditions – but only as far as necessary while staying as close to your intended effect as possible.

Your entire vision captured in your pocket.

The compact, 8.0 Megapixel PowerShot S80 artfully combines state-of-the-art technology with contemporary design. Its wide 28mm 3.6x optical zoom lens brings an alluring perspective to your work, while advanced features put you in full control.



8.0 MEGA
PIXELS

3.6X
ZOOM
Optical



UA Lens



28mm*
WIDE ZOOM
*35mm equivalent

21
SHOOTING
MODES



9-point
AiAF



- 8.0 Megapixel CCD for photo quality prints up to A2
- Avant garde, slim design
- 3.6x wide-angle optical zoom with UA lens element
- Commanding performance and superb results with DIGIC II and iSAPS
- Large 2.5" LCD with wide viewing angle and real-time histogram display for advanced shooting
- Multi Control Dial and fast, intuitive user interface
- Fast 9-point AiAF and FlexiZone AF/AE for full focus and exposure control
- 21 shooting modes, including 12 Special Scene Modes and My Colors
- Long 30fps VGA quality movie clips and superb, high resolution XGA movies with sound recording and playback¹
- Optional converter lenses, waterproof case and slave flash
- Easy direct print and uploads with PictBridge and Print/Share button
- USB 2.0 Hi-Speed for faster image data transfer
- CANON iMAGE GATEWAY²: 100MB online space

¹ Depending on memory card speed and capacity.

² Not available in all regions.

IT'S ALL IN THE DETAIL.

Every nuance of every shot is expertly captured with PowerShot S80's 8.0 Megapixel CCD - more than enough resolution to ensure the refinements of an image are faithfully rendered. A sensor of such size lets you to shoot stills at a massive 3264 x 2448 pixels (maximum), allowing you to print to A2 and still retain incredible detail.



EVERY SHOOTING SITUATION COVERED.

With a 28mm equivalent wide angle, the PowerShot S80's 3.6x optical zoom lens is ideal for shooting everything from landscapes to portraits. The use of a UA lens - a glass-moulded aspherical lens with an ultra-high refractive index - makes it possible to incorporate a 3.6x optical lens in a slim, portable camera body.



The 3.6x wide-angle optical zoom lens consists of 8 elements in 7 groups (including 1 UA lens).



Just where you want it. The PowerShot S80's Multi Control Dial is positioned on the right and side of the camera body, for perfect control.

FROM PHOTOGRAPHER TO DIRECTOR.



With the PowerShot S80, one moment you can be shooting stills, the next you can be recording superb movies. You can shoot for up to 1GB¹ worth of movie, all with outstanding resolution and sound. VGA resolution allows shooting at a super-smooth 30 frames per second, while incredible XGA resolution means you get a larger, big-screen image when playing your movies back on your PC.



VGA (640x480 pixels)
Ideal for TV viewing



XGA (1024x768 pixels)
Excellent for PC viewing

SEE MORE OF YOUR IMAGES.

A major feature of the PowerShot S80 is its large 2.5" LCD, built into the sleek, compact casing. Offering a wide viewing angle, improved visibility and easier operation, sharing your images with others is much simpler and more fun, since you don't have to be directly in line with the LCD to see the image clearly. A live histogram on the LCD helps you evaluate exposure more accurately before you take a shot.

¹ Depending on size and speed of memory card.

Get 12x closer to shake-free stills and movies.



Featuring a 12x optical zoom with Image Stabilizer, the PowerShot S3 IS covers it all – from sweeping panoramas to super telephoto. Advanced video functions, extensive shooting modes and low-light shooting capability complete this all-star performer.



6.0 MEGA
PIXELS

12x
OPTICAL
ZOOM

OPTICAL
IMAGE
STABILIZER

ULTRASONIC

DIGIC
II

2.0" LCD
Vari-angle

FlexiZone AF/AE
CONTROL

20
SHOOTING
MODES

0cm
macro



- 12x optical zoom with optical Image Stabilizer, Ultra Sonic Motor and UD lens
- 6.0 Megapixel CCD
- Extra long¹ 30fps VGA movies with Photo in Movie feature and stereo sound
- Fast, superb results with DIGIC II, iSAPS and FlexiZone AF/AE
- 20 shooting modes
- My Colors for in-camera photo effects
- ISO 800 for great indoor and lowlight results without flash
- Widescreen (16:9) still image recording mode
- Large 2.0" vari-angle LCD with Night Display
- Optional converter lenses, slave flash and lens hood
- Easy direct printing and uploading with PictBridge and Print/Share button
- Comprehensive software and 100MB CANON iMAGE GATEWAY² online photo sharing space

¹ Depending on memory card used.

² Not available in all regions.

ZOOM IN CLOSE AND FAST.

The PowerShot S3 IS features a 12x optical zoom lens (48x combined) – equivalent to a 35mm focal length range of 36mm to 432mm – and a maximum aperture of f/2.7 to f/3.5. The zoom is powered by Canon's super-fast and virtually silent¹ Ultrasonic Motor (USM) that allows you to shoot an incredible range of scenes – especially animals or live performances. The Super Macro mode further expands your creative repertoire by enabling you to get as close as 0cm to your subject and create interesting, life-size images without compromising on quality.



WIDE-SCREEN EFFECT.

16:9 WIDESCREEN See your images fill the wide screen of your television with the PowerShot S3 IS's Wide 16:9 aspect ratio. Additionally, you can make borderless prints on wide-size paper using a SELPHY Compact Photo Printer.

LONG, HIGH QUALITY MOVIES.

Movie 30fps / VGA **Photo in Movie** Record your movies at 15 or 30 fps in VGA, or at 15, 30 or 60 fps QVGA resolution with full stereo sound – for results that will be the envy of many camcorders. Recording up to 1GB² of action, the PowerShot S3 IS automatically adjusts exposure, focus and white balance. In addition, the Photo In Movie function offers you the option of taking full 6.0 Megapixel stills² while shooting a movie.

SHAKE-FREE AND SHARP IMAGES.

The PowerShot S3 IS's Optical Image Stabilizer (IS) detects the slightest camera shake and corrects it before it can cause a blurred image. It's indispensable in low light conditions, at slow shutter speeds and when you can't use a tripod. The UD (Ultra-low Dispersion) element further enhances clarity by reducing chromatic aberrations and providing razor sharp images.



With IS



Without IS

LOW LIGHT SHOOTING CAPABILITY.

ISO 800 **ISO HI** The PowerShot S3 IS features ISO 800 and High Auto ISO that need minimal light to produce an image and are perfect for shooting indoors, at night, or in other low light situations. They result in higher shutter speeds – great for reducing blur when using a telephoto lens or capturing very fast moving subjects.



Dedicated movie button lets you shoot movies immediately, no matter what mode you're in.

¹ Speed and noise level depend on whether you're in Movie or Still mode.

² Depending on size and speed of memory card.

Stop shooting, start sharing.

Shooting and recording is just the beginning. You'll find printing, sharing and e-mailing your images is all part of the creative process.

DIRECT PRINT, MOVIE PRINT, PERFECT PRINTS.

The PowerShot S80 and PowerShot S3 IS are PictBridge compatible and support all Canon's SELPHY Compact Photo Printers and many of Canon's PIXMA printers. The cameras' Movie Print feature allows you to print a frame-by-frame index print of your movie on a single page (Sequence - only

possible with a Canon SELPHY Compact Photo Printer). With PowerShot S3 IS, you can also select a specific frame and print it on a single sheet (Single) and create borderless prints on wide-size paper with a SELPHY Compact Photo Printer (when switching to PictBridge connection).



USB 2.0 HI-SPEED

The PowerShot S80 and PowerShot S3 IS have USB 2.0 Hi-Speed capability. Especially useful when uploading large or high-resolution files, since it enables faster data transfer.

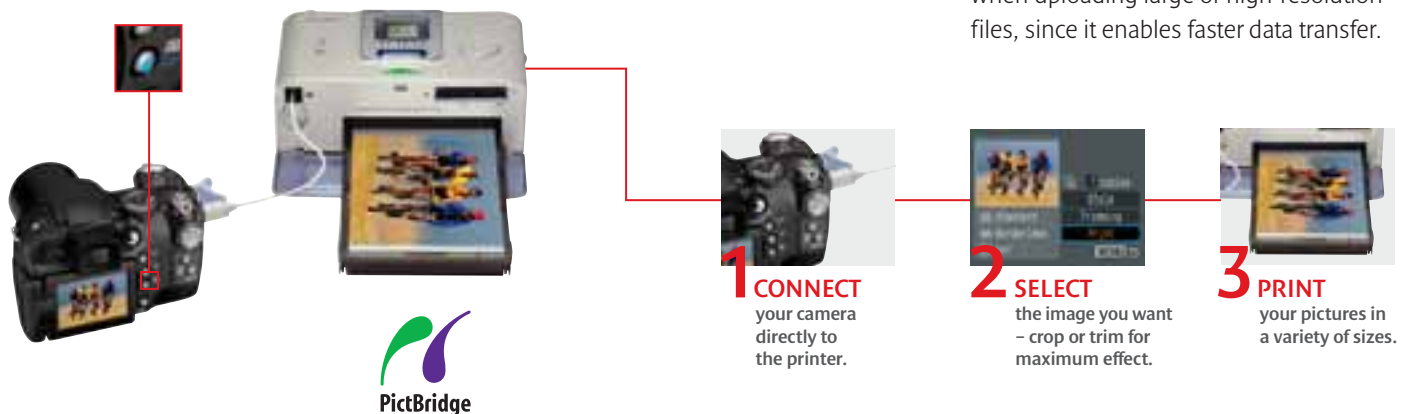


IMAGE MANAGEMENT.

Taking the shot is only the beginning. The PowerShot S80 and PowerShot S3 IS come with high-performance software applications that allow you to manage and manipulate both your still images and movies with ease. Transfer and store images, create stunning panoramas or even design your own greeting cards and flyers with an array advanced tools, filters and special effects.



CANON IMAGE GATEWAY¹ gives you 100MB of online space for storing your images and movies². Perfect for sharing your creations with friends and family.

¹ Not available in all regions
² Upload of movie clips requires a download and installation of the Movie Upload task module from the CANON IMAGE GATEWAY

CANON
IMAGE
GATEWAY

Increase your skills, expand your vision.

Expand your portfolio as you increase your skills with the extensive range of optional accessories for the PowerShot S80 and the PowerShot S3 IS.

The image displays various accessories for the Canon PowerShot S80 and PowerShot S3 IS cameras. On the left, the two camera models are shown. Red lines connect each camera to a grid of images demonstrating the effect of different accessories. To the right of each image is the name of the accessory and its specifications.

- PowerShot S80 Accessories:**
 - Approx. 100mm equivalent (with 2x Tele Converter TC-DC10*)
 - Approx. 200mm equivalent (with 2x Tele Converter TC-DC10*)
 - Approx. 28mm equivalent
 - Approx. 22mm equivalent (with 0.8x Wide Converter WC-DC10*)
 - Approx. 432mm equivalent
 - Approx. 648mm equivalent (with 1.5x Tele Converter TC-DC58B*)
 - Approx. 36mm equivalent
 - Approx. 27mm equivalent (with 0.75x Wide Converter WC-DC58A*)
- PowerShot S3 IS Accessories:**
 - TC-DC10 2x Tele Converter*
 - WC-DC10 0.8x Wide Converter*
 - TC-DC58B 1.5x Tele Converter*
 - WC-DC58A 0.75x Wide Converter*
 - WP-DC1 Waterproof Case (40m)
 - DCC-90 Soft Case
 - HF-DC1 High Power Flash

	PowerShot S80	PowerShot S3 IS
SOFT CASES		
Soft Leather Case DCC-100	●	
Soft Case DCC-90		●
WATERPROOF CASES		
Waterproof (up to 40m) Case WP-DC1	●	
Waterproof Case Weight WW-DC1	●	
CONVERSION LENSES		
Conversion Lens Adapter LA-DC20	●	
Lens Adapter/Hood Set LAH-DC20		●
2x Tele Converter TC-DC10	●	
1.5x Tele Converter TC-DC58B		●
0.8x Wide Converter WC-DC10	●	
0.75x Wide Converter WC-DC58A		●
Close-Up Lens 500D 58mm		●
FLASH ACCESSORIES		
High Power Flash HF-DC1	●	●

	PowerShot S80	PowerShot S3 IS
RECHARGEABLE BATTERIES		
Rechargeable Li-ion Battery NB-2LH	●	
NiMH Batteries NB4-300		●
BATTERY CHARGERS		
Battery Charger CB-2LWE	●	
Battery and Charger Kit CBK4-300		●
CAR BATTERY CHARGERS		
Car Battery Charger CBC-NB2	●	
AC ADAPTER KITS		
AC Adapter Kit ACK-DC20	●	
Compact Power Adapter CA-PS700		●
CABLES		
USB Interface Cable IFC-400PCU	●	●
A/V Cable AVC-DC300	●	
Stereo Video Cable STV-250N		●

* Conversion lens adapter required

Specifications PowerShot S80, PowerShot S3 IS

		PowerShot S80	PowerShot S3 IS	
IMAGE SENSOR	Type	1/1.8" CCD	1/2.5" CCD	
	Effective Pixels	Approx. 8.0M	Approx. 6.0M	
IMAGE PROCESSOR	Colour Filter Type	Primary Colour	Primary Colour	
	Type	DIGIC II with iAPPS technology	DIGIC II with iAPPS technology	
LENS	Focal Length	5.8-20.7mm (35mm film equivalent: 28-100mm)	6.0-72.0mm (35mm film equivalent: 36-432mm)	
	Zoom	Optical 3.6x, digital approx. 4.0x ¹ , combined approx. 14x	Optical 12x, digital approx. 4.0x ¹ , combined approx. 48x	
	Maximum f/number	f/2.8-f/5.3	f/2.7-f/3.5	
	Construction	8 elements in 7 groups (2 aspherical elements, including 1 UA element)	11 elements in 9 groups (1 aspherical element, 1 UD element)	
	Image Stabilisation	-	YES (lens shift-type)	
	Ultrasonic Motor (USM)	-	YES, zoom	
	Type	TTL	TTL	
FOCUSING	AF System/Points	9-point AI AF, 1-point AF (any position is available or fixed centre)	1-point AF (any position is available)	
	AF Point Selection	Manual selection using FlexiZone AF/AE	Manual selection using FlexiZone AF/AE	
	AF Lock/AF Assist Beam	On/Off Selectable / YES	On/Off Selectable / YES	
	Manual Focus	YES	YES	
	Focus Bracketing	YES	YES	
	Closest Focusing Distance	4cm	0cm	
	Metering Modes	Evaluative, Centre-weighted average, Spot (centre or linked to focusing frame)	Evaluative, Centre-weighted average, Spot (centre or linked to focusing frame)	
EXPOSURE CONTROL	AE Lock	On/Off Selectable	YES	
	Exposure Compensation/AEB	+/- 2 EV in 1/3 stop increments / 1/3-2 EV in 1/3 stop increments	+/- 2 EV in 1/3 stop increments / 1/3-2 EV in 1/3 stop increments	
	ISO Speed Equivalent	AUTO, 50, 100, 200, 400	AUTO, High ISO Auto, 80, 100, 200, 400, 800	
SHUTTER	Speed	15-1/2,000 sec (Slow Shutter speeds of 1.3 sec and more, available in Manual and Shutter Priority AE modes only. Shutter speeds of 1.3 sec and more operate with noise reduction. Certain combinations of shutter speed and aperture may not be available.)	15-1/3,200 sec (Slow Shutter speeds of 1.3 sec and more, available in Manual and Shutter Priority AE modes only. Shutter speeds of 1.3 sec and more operate with noise reduction. Certain combinations of shutter speed and aperture may not be available.)	
	Type	TTL	TTL	
WHITE BALANCE	Settings	Auto, Daylight, Cloudy, Tungsten, Fluorescent, Fluorescent H, Flash, Underwater, Custom	Auto, Daylight, Cloudy, Tungsten, Fluorescent, Fluorescent H, Flash, Custom	
COLOUR MATRIX	Type	sRGB	-	
VIEWFINDER	Viewfinder/Dioptre Correction	Real-image zoom, optical viewfinder / -	EVF (0.33" type), approx. 115,000 pixels / -5.5-1.5dpt	
LCD MONITOR	Monitor/Coverage	2.5" P-Si TFT, approx. 115,000 pixels / 100%	Vari-angle 2.0" Low temperature P-Si TFT, approx. 115,000 pixels / 100%	
	Brightness	Adjustable to one of fifteen levels	Adjustable to one of two levels	
FLASH	Modes	Auto, Manual Flash On/Off	Auto, Manual Flash On/Off	
	Slow Sync Speed	YES	YES	
	Red-eye Reduction	YES	YES	
	Flash Exposure Compensation	+/- 2 EV in 1/3 stop increments	+/- 2 EV in 1/3 stop increments	
	Flash Exposure Lock	YES	YES	
	Second Curtain Synchronisation	YES	YES	
	Built-in Flash Range	55cm-4.2m (W)/2.0m (T) (at ISO AUTO equivalent)	50cm-5.2m (W)/90cm-4.0m (T) (at ISO AUTO equivalent)	
	External Flash	Canon's High Power Flash HF-DC1	Canon's High Power Flash HF-DC1	
	SHOOTING	Modes	Auto, Program AE, Shutter priority AE, Aperture priority AE, Manual, Custom, My Colors (9 settings), Stitch Assist, Movie, Special Scene Mode (Portrait, Landscape, Night Scene, Foliage, Snow, Beach, Fireworks, Underwater, Indoor, Kids&Pets, Night Snapshot, Digital Macro)	Auto, Program AE, Shutter priority AE, Aperture priority AE, Manual, Custom, Portrait, Landscape, Night Scene, Sports, Stitch Assist, Movie, Special Scene (Foliage, Snow, Beach, Fireworks, Indoor, Night Snapshot, Color Accent, Color Swap)
		Photo Effects	Vivid, Neutral, Low Sharpening, Sepia, Black & White, Custom, My Colors (9 settings)	My Colors (My Colors Off, Vivid, Neutral, Sepia, Black & White, Lighter Skin Tone, Darker Skin Tone, Positive Film, Vivid Blue, Vivid Green, Vivid Red, Custom Color)
Drive Modes		Single, Continuous, Self-Timer	Single, Continuous, Self-Timer	
Continuous Shooting		Approx. 1.8 fps ² (until memory card becomes full) ³	High Speed at approx. 2.3 fps ² (until memory card becomes full) ³ Normal at approx. 1.5 fps ² (until memory card becomes full) ³	
Intervalometer		Up to 100 shots in 1-60 minute increments ³	Up to 100 shots in 1-60 minute increments ³	
RECORDING PIXELS / COMPRESSION		Image Size	(L)3264 x 2448 (M1)2592 x 1944 (M2)2048 x 1536 (M3)1600 x 1200 (S)640 x 480	(L)2816 x 2112 (M1)2272 x 1704 (M2)1600 x 1200 (S)640 x 480, (W)2816 x 1584
		Compression	Superfine, Fine, Normal	Superfine, Fine, Normal
	Movies	(L1)1024 x 768, 15 fps (L2)640 x 480, 30/15 fps (M)320 x 240, 30/15 fps (S)160 x 120, 15 fps	(L)640 x 480, 30/15 fps (M)320 x 240, 60/30/15 fps	
MOVIE LENGTH	Up to 1GB (1024 x 768, 15 fps and 640 x 480, 320 x 240, 30/15 fps) ³	Up to 1GB or 60 min ³		
	Up to 3 min (160 x 120) ³			
FILE TYPES	Still Image Type	JPEG compression, (Exif 2.2 [Exif Print] compliant)/ Design rule for Camera File system, Digital Print Order Format [DPOF] Version 1.1 compliant	JPEG compression, (Exif 2.2 [Exif Print] compliant)/ Design rule for Camera File system, Digital Print Order Format [DPOF] Version 1.1 compliant	
	Movies	AVI [Motion JPEG compression + WAVE (monaural)]	AVI [Motion JPEG compression + WAVE (stereo)]	
	Sound Files	WAVE (monaural)	WAVE (stereo)	
DIRECT PRINT	Canon Printers	Canon SELPHY Compact Photo Printers and PIXMA Printers supporting PictBridge (ID Photo Print, Movie Print supported on SELPHY CP printers only)	Canon SELPHY Compact Photo Printers and PIXMA Printers supporting PictBridge (ID Photo Print, Movie Print supported on SELPHY CP printers only)	
	PictBridge	YES	YES	
OTHER FEATURES	My Camera	Start-up image and camera sounds customisation	Start-up image and camera sounds customisation	
	Sound Memo	Up to 60 sec per image	Up to 60 sec per image	
	Intelligent Orientation Sensor	YES	YES	
	Histogram	YES, live histogram	YES, live histogram	
	Playback Zoom	Approx. 2x-10x	2x-10x	
	Self Timer	Approx. 2 or 10 sec or Custom	Approx. 2 or 10 sec or Custom	
	Menu Languages	22 languages	23 languages	
INTERFACE	Computer/Other	USB 2.0 Hi-Speed (Mini-B, PTP) / A/V output (PAL/NTSC)	USB 2.0 Hi-Speed (Mini-B, PTP) / A/V output (PAL/NTSC)	
MEMORY CARD	Type	Secure Digital (SD) Card, MultiMediaCard (MMC), 32MB SD card supplied	Secure Digital (SD) Card, MultiMediaCard (MMC), 16MB SD card supplied	
	SUPPORTED OPERATING SYSTEM	Windows 98SE/Me/2000 SP4/XP/XP SP1-2 OS X v10.2-10.3	Windows 98SE/Me/2000 SP4/XP/XP SP1-2 OS X v10.2-10.4	
SOFTWARE	Browsing & Printing	ZoomBrowser EX (PhotoRecord)/ ImageBrowser	ZoomBrowser EX / ImageBrowser	
	Other	PhotoSitch, RemoteCapture	PhotoSitch, RemoteCapture	
	Drivers	TWAIN (Windows 98/2000), WIA (Windows Me)	TWAIN (Windows 98/2000), WIA (Windows Me)	
POWER SOURCE	Image Manipulation	ArcSoft PhotoStudio	ArcSoft PhotoStudio	
	Batteries	Rechargeable Li-ion Battery NB-2LH/NB-2L (NB-2LH battery and charger supplied)	4x AA-size Alkaline or NiMH Batteries (NB4-300) (Alkalines supplied)	
ACCESSORIES	A/C Power Supply	Optional, AC Adapter kit ACK-DC20	Optional, Power Adapter CA-PS700	
PHYSICAL SPECIFICATIONS	Operating Environment	Please see accessories page inside brochure	Please see accessories page inside brochure	
	Dimensions (WxHxD)	0-40°C, 10-90% humidity	0-40°C, 10-90% humidity	
	Weight (body only)	104.0 x 57.0 x 38.8mm (excluding protrusions)	113.4 x 78.0 x 75.5mm (excluding viewfinder-eyepiece & protrusions)	
		Approx. 225g	Approx. 410g	

1 Digital zoom available for still image and standard movie modes only
 2 Large/Fine with LCD monitor off
 3 Depending on memory card speed/capacity

Some images are simulated for clarity of reproduction. All data is based on Canon standard testing methods except where indicated. Specifications are subject to change without notice. ® and ©: All company and/or product names are trademarks and/or registered trademarks of their respective manufacturers in their markets and/or countries.



Canon Inc
www.canon.com

Canon Europa NV
www.canon-europe.com

© Canon Europa NV 2006

